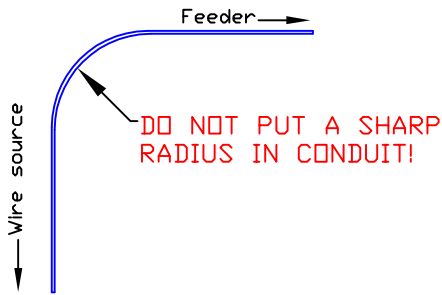




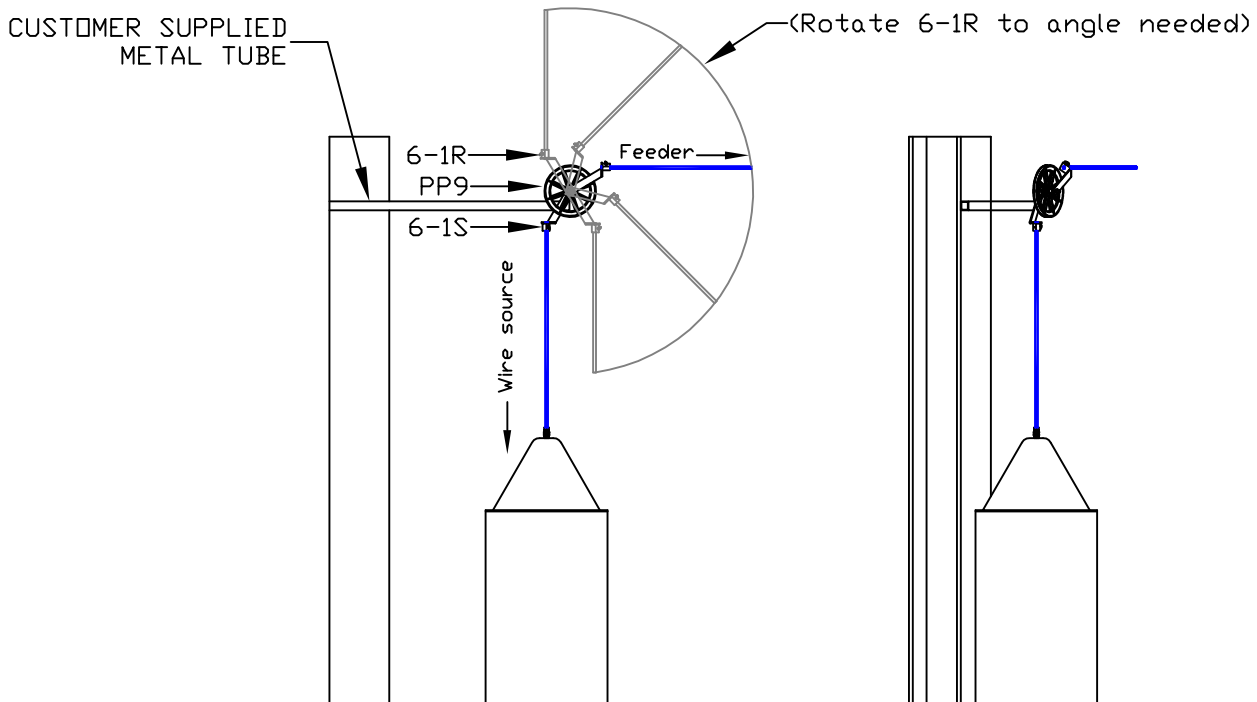
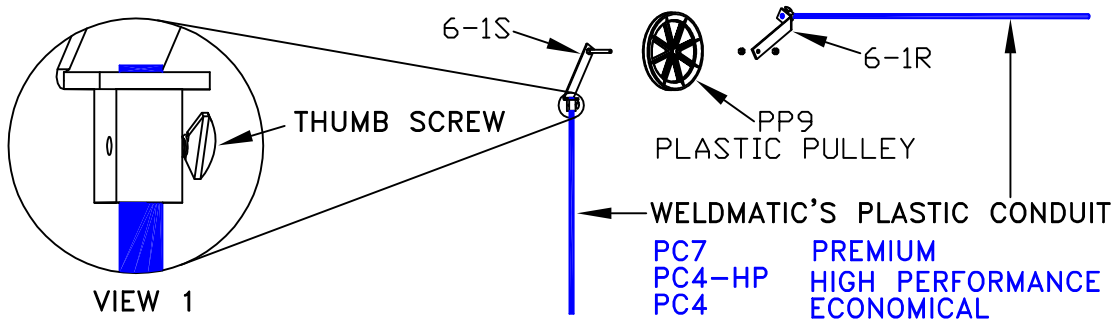
CWD-7, CHANGE WIRE DIRECTION KIT

STEEL LINED FLEXIBLE CONDUIT WITH A SHARP RADIUS CREATES DRAG ON WELDING WIRE. WELDMATIC HAS THE SOLUTION TO THIS PROBLEM.



By using Weldmatic's CWD-7, direction of wire can be changed without adding a friction point which causes wire to wear through the side wall of plastic conduits. Eliminates need to use steel lined flexible conduit with a sharp radius creating high friction point causing a high amount of drag to be added to welding wire putting stress on the feed motor and welding system. Thumb screw holds conduit in place eliminating the need for fittings.

(CWD-7 comes with 6-1R Rotating Pulley Bracket, 6-1S Pulley Bracket with Shaft and PP9 Plastic Pulley)



RUN CONDUIT STRAIGHT FOR LEAST DRAG ON WELDING WIRE!!!

Visit <http://www.weldmatic.com/documents.htm> or call for more information.